

Chateau de Broutel 2020

14-17 February



EHIC cards



- **Bring to Mrs Bamford's office if you didn't fetch it tonight.**

BEHAVIOUR

Ambassador for school and country:

- Coach and eurotunnel
- Centre
- Visits out and about

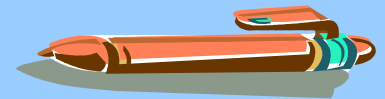
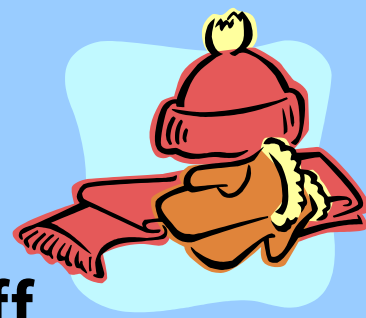
Do as asked by every member of staff – us and MA

Listen carefully to all instructions at all times!

- Litter- bin it!
- no alcohol / no smoking / no substances / no offensive weapons/ no laser pens/ no knives
- Be kind to each other- we are in this together so let's enjoy ourselves!
- **Sanctions will apply!**

Kit List

- Lots of layers and a warm coat!
- 1 session of outdoor activities – old stuff (including long-sleeved tops and trousers) plus bin-liner to put dirty clothes in.
- Old trainers for activities
- Gloves/scarf/ hat etc.
- Sturdy footwear suitable for (muddy) walking
- Share hair dryers etc. – international plug
- No football strips or team logos allowed
- Towels/toiletries
- Pencil case / travel entertainment
- Indoor shoes / slippers for in rooms
- Sleeping bag (in labelled bin bag/ carry bag)





Luggage



- **Main luggage** – not too big to shift!
- **Hand luggage** – bottled water / reading stuff / pen/ toiletries, pillow and healthy packed breakfast and lunch.
- **NO** sweets, crisps, biscuits, sugary drinks to be had whenever we are on the coach. Pack treats!
- **NO GUM anywhere, anytime!**



VALUABLES

- **All completely at own risk- not school party's responsibility**
mobile phones, games systems, digital cameras, tablets, jewellery, smart watches etc.
- **Mobiles restrictions: problems/emergency**
- **School will contact you in an emergency, not pupils. Pupils will be told to turn OFF phones in an emergency.**
- Security whilst out and about- ID cards
- Money- we run a bank system
- Please set phone to suitable tariff before departure!
Be aware of overseas call charges on your network.





ROOMING



- Students have been roomed with friends they have requested
- Rooms of about 4-7 people- be mindful of tidiness and personal space.
- All rooms have unique number keypads, you must ensure each group member has a note of this number
- No students are allowed to go into any other group's room. Minimises issues.
- All en-suite shower and toilet facilities
- Keep **clean/tidy**
- **NO OUTDOOR SHOES in rooms- bring slippers!**
- Minimal time spent in rooms in daytime



Wednesday 12th Feb



On the morning of this date, before form time, pupils need to bring the following items to room 4:

- **Passport-** not in a cover.
- **Pocket Money-** approx. 60 Euros (in small notes) in named, sealed envelope.
- **Travel money** – Please bring a named, sealed envelope with approx. £10 in so that your child can buy themselves some tea on the way home on Monday 17th!

Thursday 13th Feb

- **Attendance on Thursday 13th is compulsory. If you are absent on that day due to sickness or injury you will be deemed unfit to travel.**

Departure day – Friday 14th Feb

- **Have a sensible breakfast to keep you going!**
- **Travelling clothes** – sensible, layered clothing and footwear!!
- **Medication in envelope** –prescriptions / headache pills (not inhalers- pupils keep them)
- **Travel sickness pills** (take before departure) can be kept in own bag.
- **Double packed lunch (healthy options):** 2nd breakfast and also lunch in a carrier bag.
- **Timing** – Meet 4.45 am depart 5.15am

• **No Parking in bus bay**



ITINERARY: Friday 14th Feb

- Depart approx. 5.15am
- **Stop at services:** Eat **healthy** packed breakfast.
- **Eurotunnel to France- 12.20 UK time**
- Have **healthy packed lunch** on train.
- Arrive at chateau approx. 5 pm
- Sort out rooming / fire procedures
- Evening meal together
- Evening activities – movie night!
- Bed – settling down – lights out

Saturday 15th Feb.

- Get up- dress warm
- Breakfast
- **Morning-** Walk into Rue, visit a café, visit market, local tourist sites, shops & supermarket.
- Back to chateau for lunch and then get changed.
- **Afternoon-** 2 different outdoor activities (wear 'get messy' clothes and shoes for these)
- Evening meal
- Evening activities – quiz night!
- Bed – settling down – lights out





Sunday 16th February

- Up, dressed in warm clothes, sturdy footwear, breakfast
- Albert Museum Visit
- Lochnagar Crater
- Visit to Thiepval monument
- Thiepval museum
- Canadian trenches visit
- Evening meal
- Evening activities (camp fire) Take torch!
- Start packing suitcases and tidying up rooms
- Bed – settling down – lights out



Monday 17th February

- Up, dressed for travel, pack final things away, luggage on coach and breakfast.
- Chocolate factory visit (and shopping)
- Hypermarket for final shopping
- Eurotunnel @ 13.20 UK time
- Stop for tea at the services on the way home.
- Return to Hungerhill approx 20.00 – text messaging service will operate to let you know travel details on the actual day. Be available from 7pm onwards!



Text Messaging Service

- Did you all get a reminder text about this evening? If not then I need to check your contact details are up to date / correct.**
- If there are any changes to the numbers you have provided you must let Mrs Bamford know!**

Birthdays?

If any student has a birthday whilst we are away can you let us know at the end of the meeting please?



MEDICAL INFO / EMERGENCY CONTACTS

- Any changes now- see me?
- If there are any changes between now and the trip you must let me know ASAP